

SERENITY



The screenshot displays a 3D perspective view of a building's interior, likely a greenhouse or industrial facility, with various environmental and operational data overlays. The interface includes a top status bar, a left sidebar with navigation icons, and a bottom navigation bar.

Top Status Bar:

- Calendar icon: 42
- Twitter icon: 11413
- Temperature: 21.6°
- Humidity: 70%
- CO2: 1788ppm
- Light: 5
- Pressure: 38Pa

Left Sidebar:

- Home icon
- Twitter icon
- Fan icon
- Light icon
- Factory icon

3D Model and Data Overlays:

- Top Left (Red House Icon):**
 - Temperature: 21.6°
 - Humidity: 70%
 - Pressure: 20.0°
 - Humidity: 68%
- Top Center (Light Bulb Icon):**
 - Light: 24Lux
- Top Right (Cloud Icon):**
 - EXT 70%
 - EXT 10.8°
- Internal Data Points:**
 - CH1: 22.5°
 - CH2: 22.0°
 - CH3: 20.9°
 - CH4: 21.1°
- Bottom Right (Summary Box):**
 - CO2: 0.80m³/h/kg
 - Flow: 42245m³/h
 - Pressure: 1.28m³/h/kg
 - Time: 0s



**Tuffigo
Rapidex**

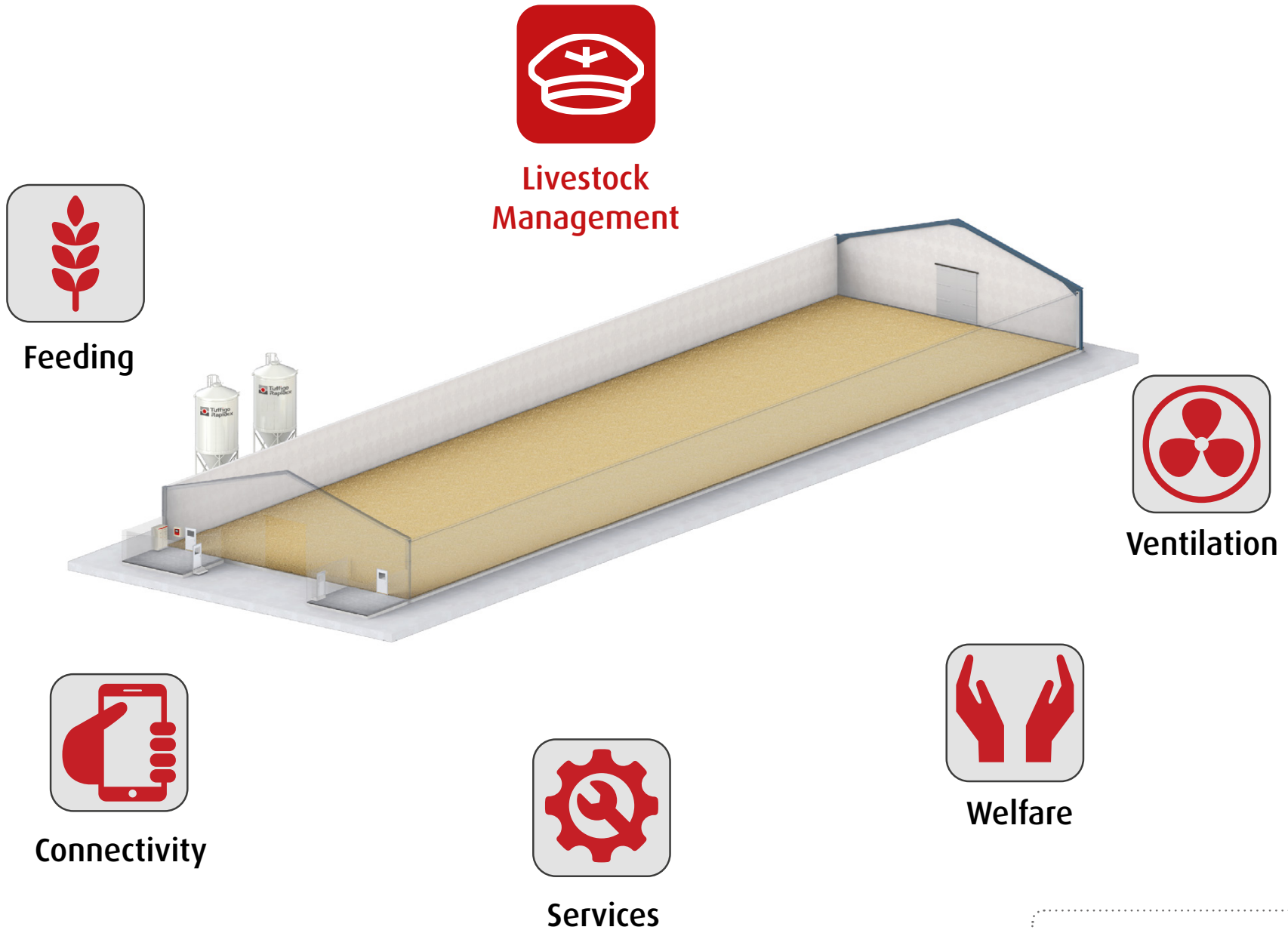
S E R E N I T Y

A TOOL DEVELOPPED WITH **FARM PRODUCERS**,
FOR **FARM PRODUCERS** .

It was born from the need to simplify equipment management in order to refocus on animal care.

Serenity allows catching in a trice the situation in real time, anticipating and having a fine tuning in livestock following up .

■ RANGE POSITIONING



RANGE POSITIONING



Management

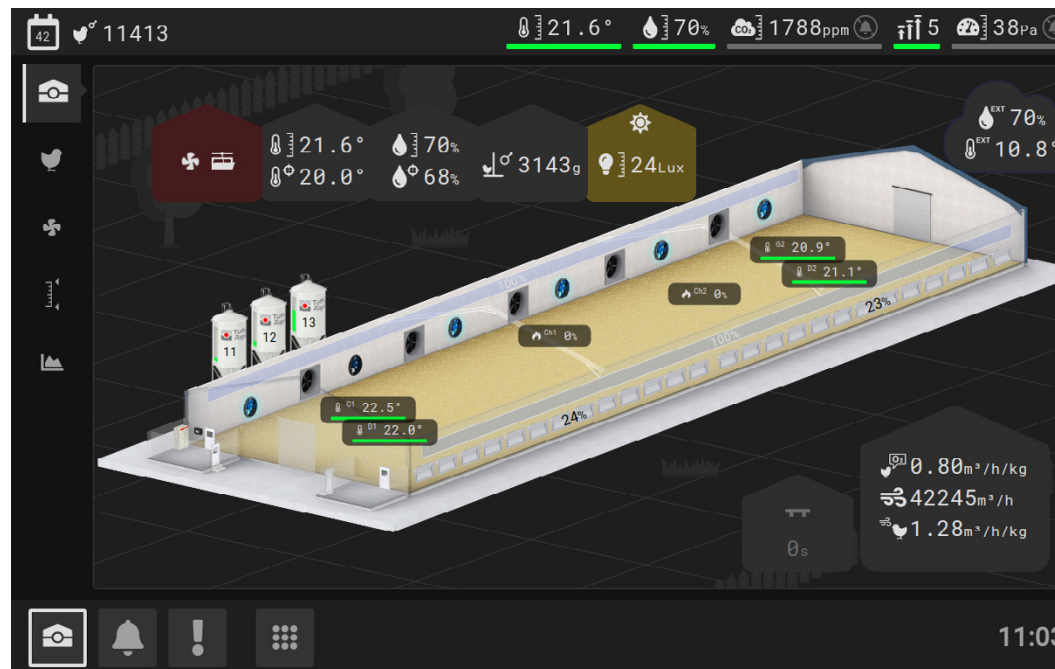


Our range of computers are evolving in order to fulfill your needs by proposing some up to date equipment.

■ PRINCIPLE

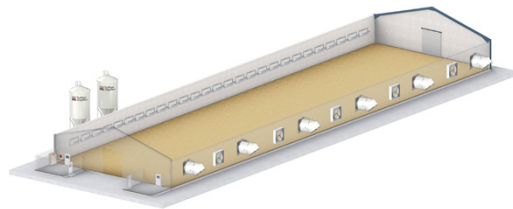
Thanks to data centralization,
Serenity computer allows easy farm management

EXAMINE - ANALYSE - TAKE ACTION

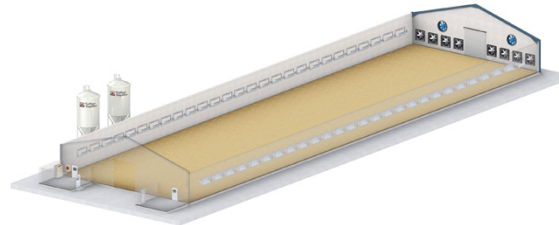
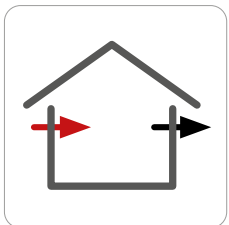


■ Use

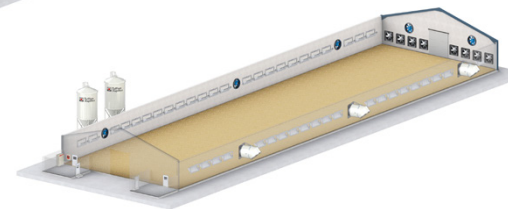
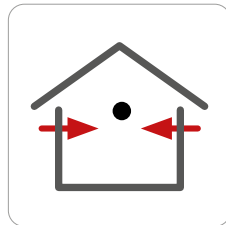
4 DYNAMIC VENTILATION CONCEPTS FOR BROILERS



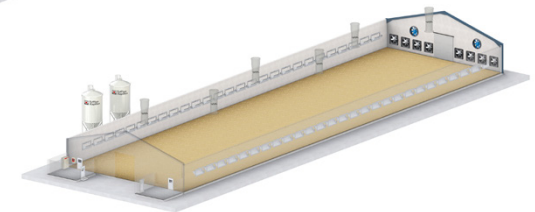
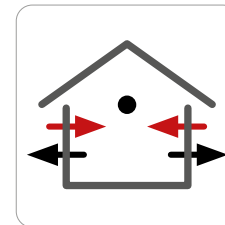
Cross



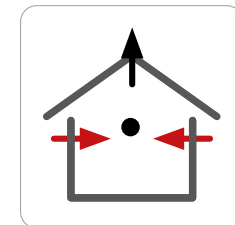
100% Tunnel



Bilateral >> Tunnel



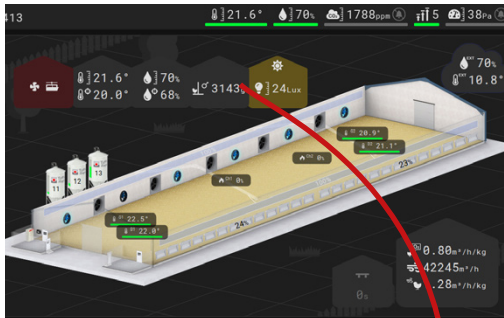
Chimney extraction >> Tunnel



USE

CUSTOMIZATION

3D building
with equipment adapted to each concept



Cross



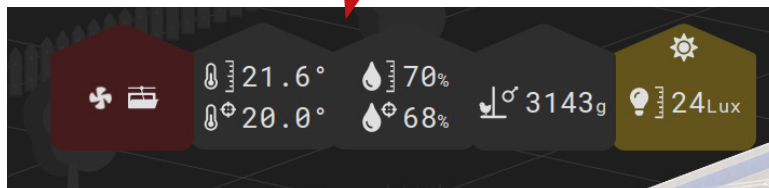
100% Tunnel



Bilateral >> Tunnel



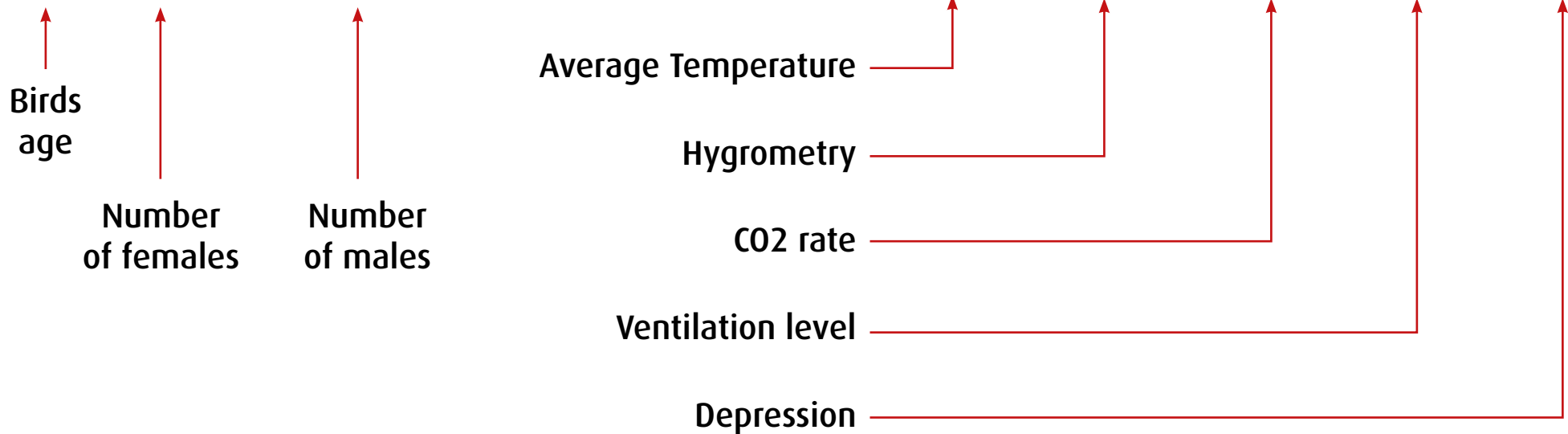
Chimney extraction
>> Tunnel



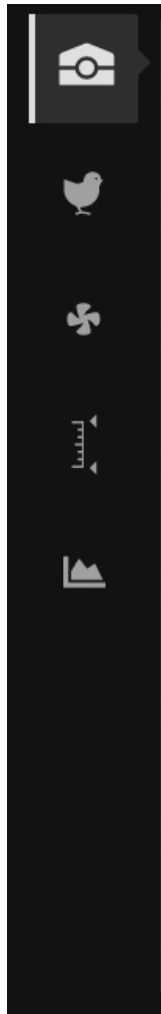
The user can select the data displayed
on home screen

- **USE - A STATUS BAR TO EXAMINE**

Vital parameters **PERMANENTLY DISPLAYED**



■ **USE - DASHBOARDS TO ANALYSE**



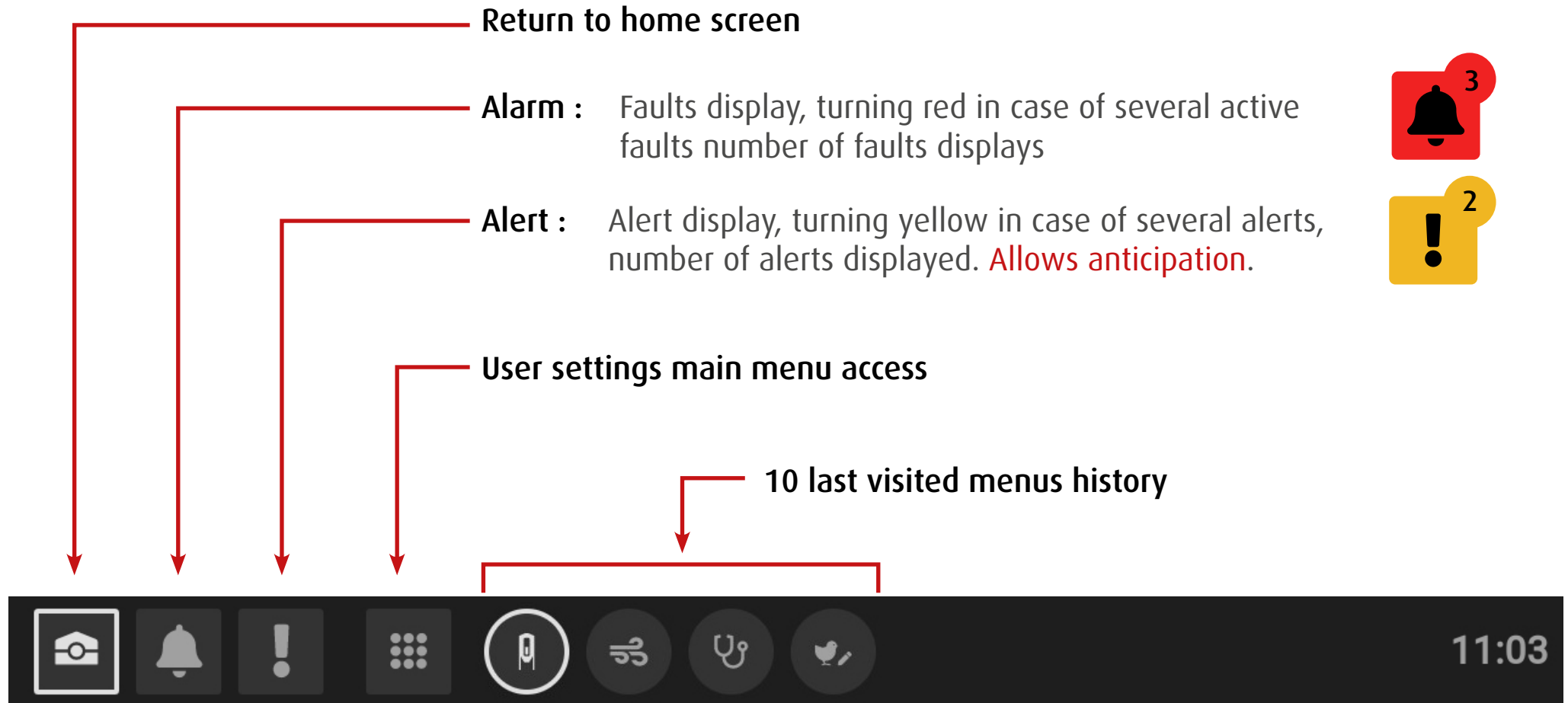
← «Animal» dashboard

← «Ventilation» dashboard

← «Measure» dashboard

← «Curves» dashboard

■ USE - A BROWSER TO TAKE ACTION



Use - HOME SCREEN

Over 30 DATA on 1 single screen

INSIDE CLIMATE



- Temperature
- Humidity
- Brightness

(CO2, Negative pressure, NH3...)

CUSTOMIZABLE

VISUAL DATA



Measured data



Target data (setpoint)



OUTSIDE CLIMATE



- Temperature
- Humidity




LEVEL OF USE OF EQUIPMENTS

- Ventilation level
- Air inlet opening
- Fans in use
- Lighting status
- Feed stock level in silos

- OK
- Attention zone, we are getting away from the setpoint
- Alarm, an anomaly has been detected, action has to be taken

■ **ERGONOMIC ADVANTAGES**

AN EASY TO USE TOOL - ACCESSIBLE TO ALL

- Quick parameters view
 - Dark dashboard : Google Android inspired environment (human eye research)
 - Simple color coding :
 -  Green : normal use
 -  Yellow : warning
 -  Red : critical default
- Color coding : Action, critical issue prevention
- Warning and default : Time and details displayed in the respective tabs on the bottom banner
 - Educational tool allowing immediate handling
 - Intuitive and convenient use for everyone
 - Data/parameters : Easily modifiable on numeric keypad.
Configurable (information mini and maxi)

■ TECHNICAL ADVANTAGES

NEW FEATURES

USER

- Addition of the correction of the air needs curve.
- Temporary acceleration or deceleration of ventilation.
- Building/ground dedicated preheating. With dew point display.
- Modular features management.
- Feed description per silo.
- Ventilation quality display.
- Fan covers display and management.

INSTALLER

- Air inlet opening, ventilation level setting and control.
- Suction area taken into account based on fan type and accessories.
- Building description: equipment naming using accurate capacity curves of Tuffigo Rapidex equipment

■ TECHNICAL DATA

THE BOX - THE OPERATING SCREEN

STATUS INDICATOR

White: ok

Blinking white: start up / communication issue

Blinking red:
Critical alert = Siren on

SCREEN

10 inches
(AVItouch 7 ")

SEALING

IP54



The screen is a simple MONITOR, REMOTE ACCESS made possible for more SAFETY.

■ TECHNICAL DATA

DEVICE DIMENSIONS



400 x 400 x 200 mm
11,34 kg



600 x 400 x 200 mm
16,47 kg

2 Boxes, 6 configurations

- Same construction, same reliability
- 400 x 400 size designed in order to replace Avitouch
- 600 x 400 size offers even more flexibility, it can be loaded with more electronic cards

TECHNICAL INFORMATION

INPUTS/OUTPUTS

SENSORS		
Inside temperature sensor	✓	x20
Outside temperature sensor	✓	x1
CO2 sensor	✓	x1
NH3 sensor	✓	x1
Humidity sensor	✓	x1
Outside humidity sensor (with pack)	✓	x1
Vacuum	✓	x1
Luxmeter	✓	x2
Thermostat	✓	x10
Twilight switch	✓	x1
COUNTERS		
Water meter	✓	40 max in totality
Feed meter	✓	
Water meter for cooling	✓	
Gas meter (with pack)	✓	
Energy meter (with pack)	✓	
WEIGHING		
Birds weighing (with pack)	✓	x4
Silo weighing (with pack)	✓	x6

CONNECTIVITY	
USB port (Update, backup, export data)	✓
INTERNET connection via RJ45 Ethernet port	✓
INTERNET connection via modem 4G/3G	✓
Secure remote access	✓

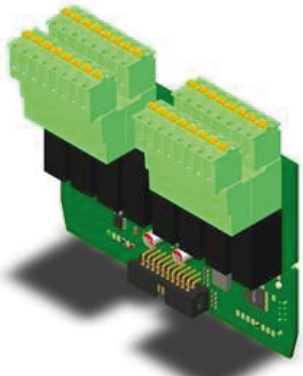
AIR INTAKE MANAGEMENT		
Air inlet management in dynamic ventilation	✓	x12
Number of zones	✓	x3
Ridge ventilation (delamination)	✓	
AIR EXTRACTION MANAGEMENT		
EC BLUE management	✓	
Group of ventilation	✓	x40
OTHERS		
Air mixers management	✓	x3
HEATING		
Slab heating switch	✓	8 max in totality
Heater switch	✓	
LIGHTING		
Light switch	✓	x20
Windows blackout control	✓	x4
COOLING		
Fogging or pad cooling pump switch	✓	
Chain feeder control relay	✓	x10
Water rationing	✓	40 max in totality
Feed rationing	✓	
Nipples flushing	✓	x20

Alarm & Security	
Monitoring contact to alarm	✓
Timer	✓ x 10

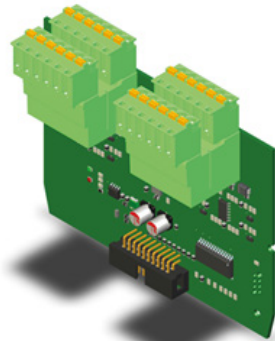
■ TECHNICAL INFORMATION

CARDS

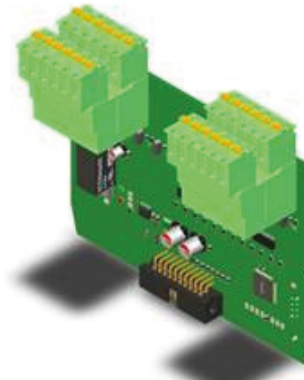
• INTERNAL



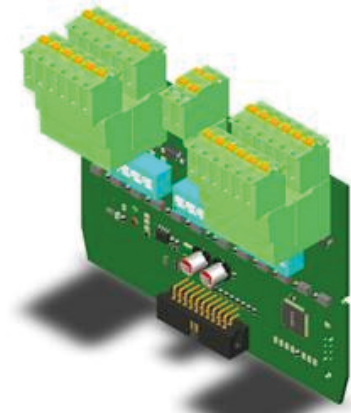
500I575041
CARD 18TR02 8 RELAYS



500I575042
CARD 18TR03 12 ANA OUTPUTS

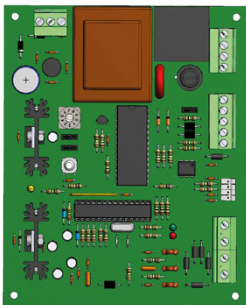


500I575043
CARD 18TR04 12 ON/OFF INPUTS

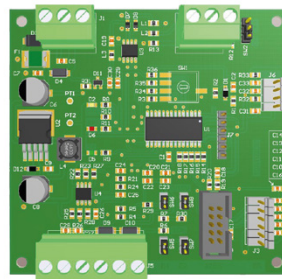


500I575044
CARD 18TR05 12 ANA INPUTS

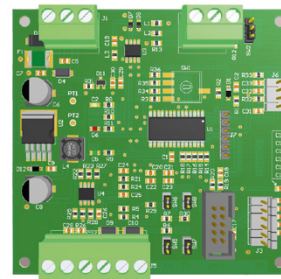
• EXTERNE



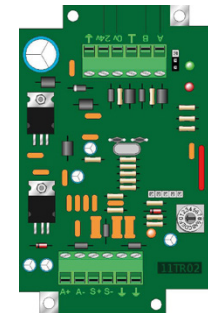
CARD 10TR02 – SILO WEIGHING



CARD 10TR03 – ECBLUE



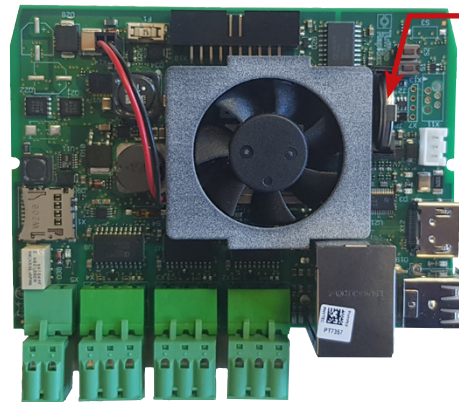
CARD 10TR03 – FCONTROL



CARD 11TR02 – BIRDS WEIGHING

■ TECHNICAL INFORMATION DESIGN

MOTHER BOARD



Battery

- 1 Ethernet port
- 4 USB ports
- 1 HDMI port
- 1 SD Card Port
- 3 RS 485 bus
- 1 Alarm output

CARD

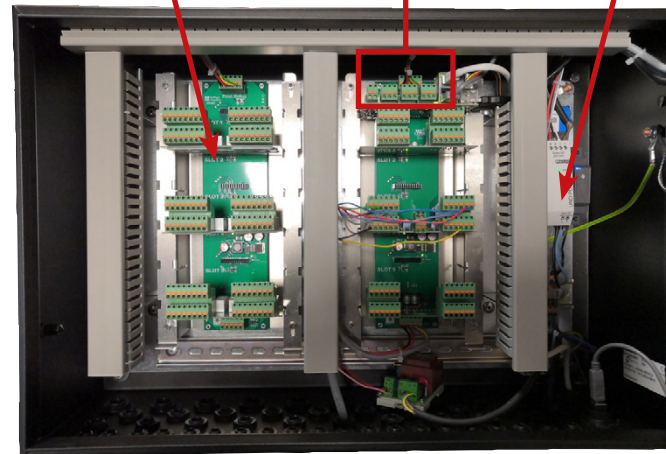
for front light strip management

BACK PANEL

with 6 slots per panel

Optionnal cards :

- Relay
- On/Off input
- 0-10V inputs or sensors
- 0-10V outputs



TRANSFORMER

for cards power supply



■ TECHNICAL INFORMATION

FEATURES - A COMPREHENSIVE MENU

 Batch

 Weighing

 Setpoints

 Ventilation

 Level

 Air inlets

 Fans

 Diagnosis

 Water

 Flushing

 Feeding

 Silos

 Heating

 Fogging

 Lighting

 Windows

 Alarms

 Calculator

 Software
update

 System

 Dashboard

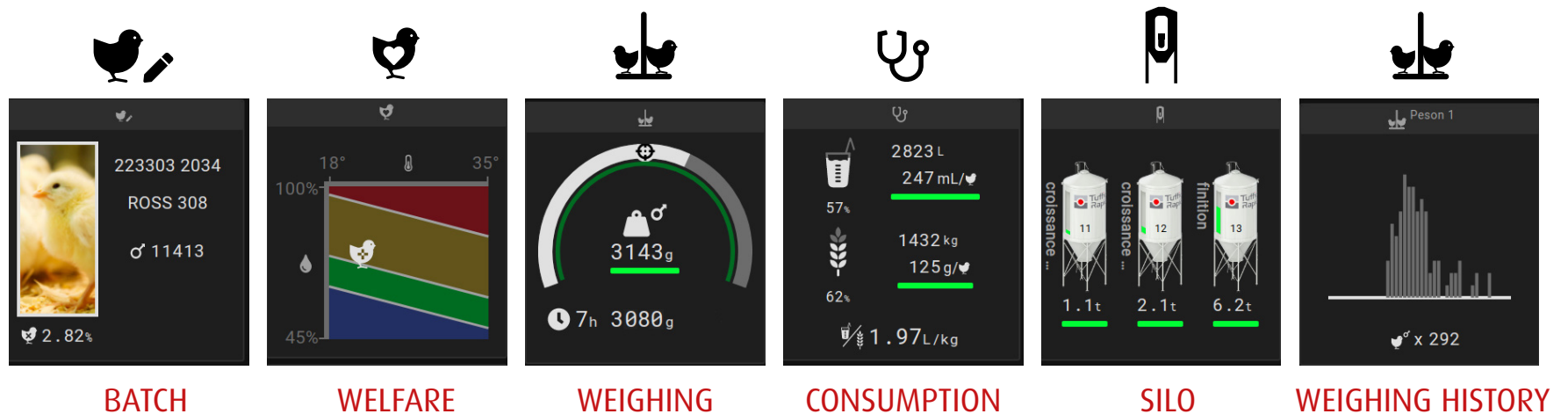
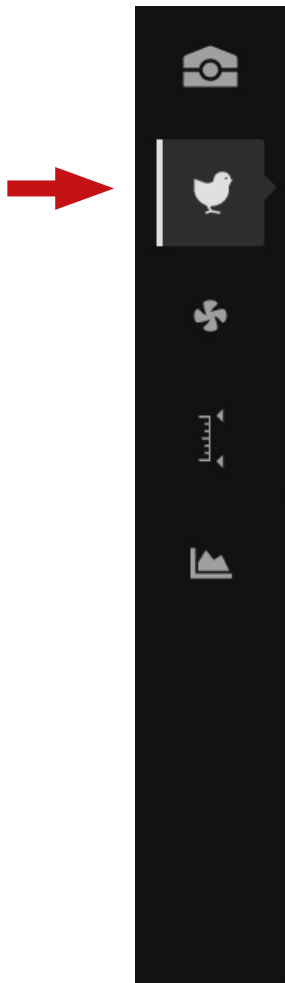
 Installer

TECHNICAL INFORMATION

DASHBOARDS FOR ANALYSIS

«BIRDS» DASHBOARD

Informing about birds health



- Number of birds
- Genetics
- Mortality rate

- Welfare based on several factors like temperature and humidity

- Weight
- Weight at a fixed time
- Target weight

- Water consumption
 - compare to the day before
 - in total and per head
- Feed consumption
 - compare to the day before
 - in total and per head
- Water/Feed ratio

- Feed name
- Weight
- Remaining capacity

- Weighing history of the day
- Number of weighings

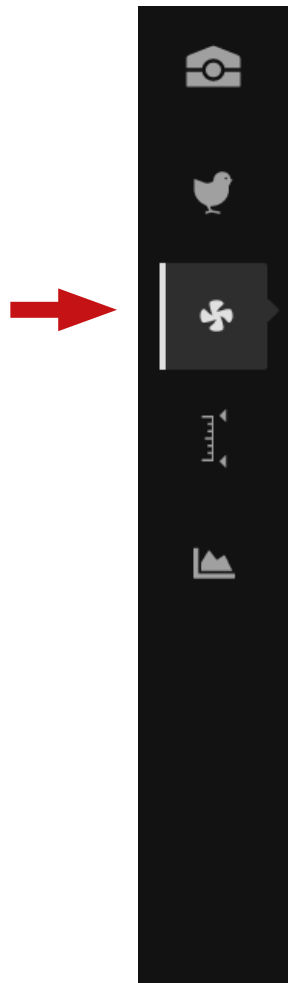
Feed and birds growth indications

TECHNICAL INFORMATION

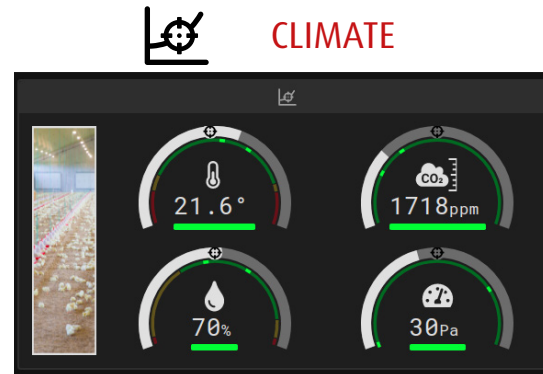
DASHBOARDS FOR ANALYSIS

«VENTILATION» DASHBOARD

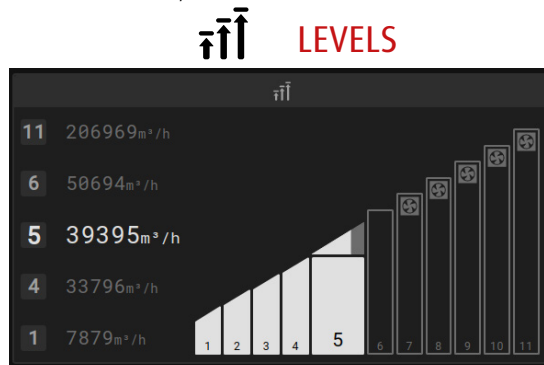
Informing on parameters related to birds oxygenation



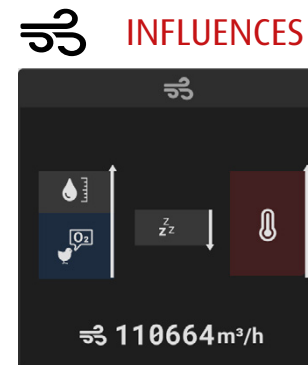
- Localisation
- Outside temperature
- Outside humidity



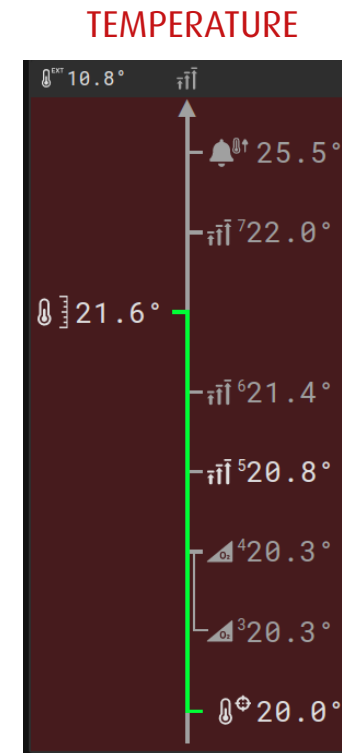
- Temperature
- Humidity
- CO2
- Negative pressure



- Ventilation level
- Oxygenation rate



- Ventilation flow
- Air needs
- Positive and negative influences
- Oxygenation or beat the heat



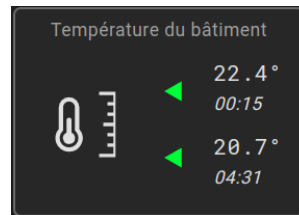
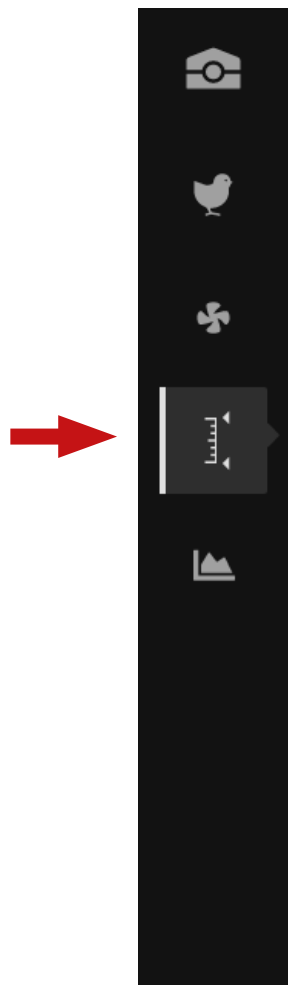
- Outside temperature
- Température setpoint
- Average of température

TECHNICAL INFORMATION

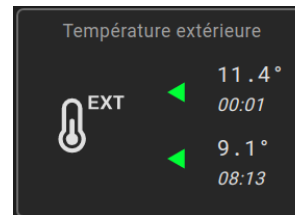
DASHBOARDS FOR ANALYSIS

«MEASURES» DASHBOARD

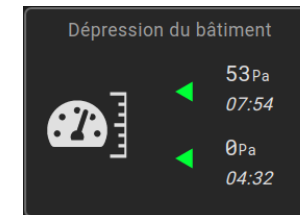
Mini and maxi in details at D- DAY and the day before



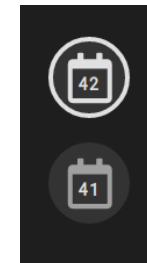
INSIDE TEMPERATURE



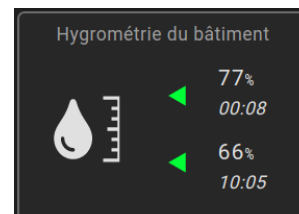
OUTSIDE TEMPERATURE



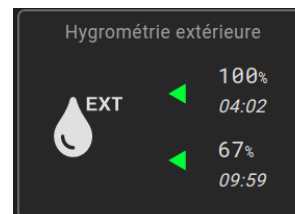
NEGATIVE PRESSURE



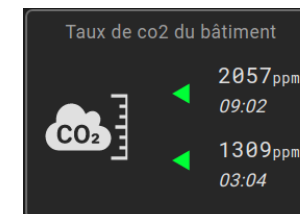
AT D-DAY and
D - 1 DAY



INSIDE HUMIDITY



OUTSIDE HUMIDITY



CO2 RATE

maximum record at D DAY
and the day before since
midnight

Minimum record at D DAY
and the day before since
midnight



HOTTER AREA

Displayed with measurement time



COLDER AREA

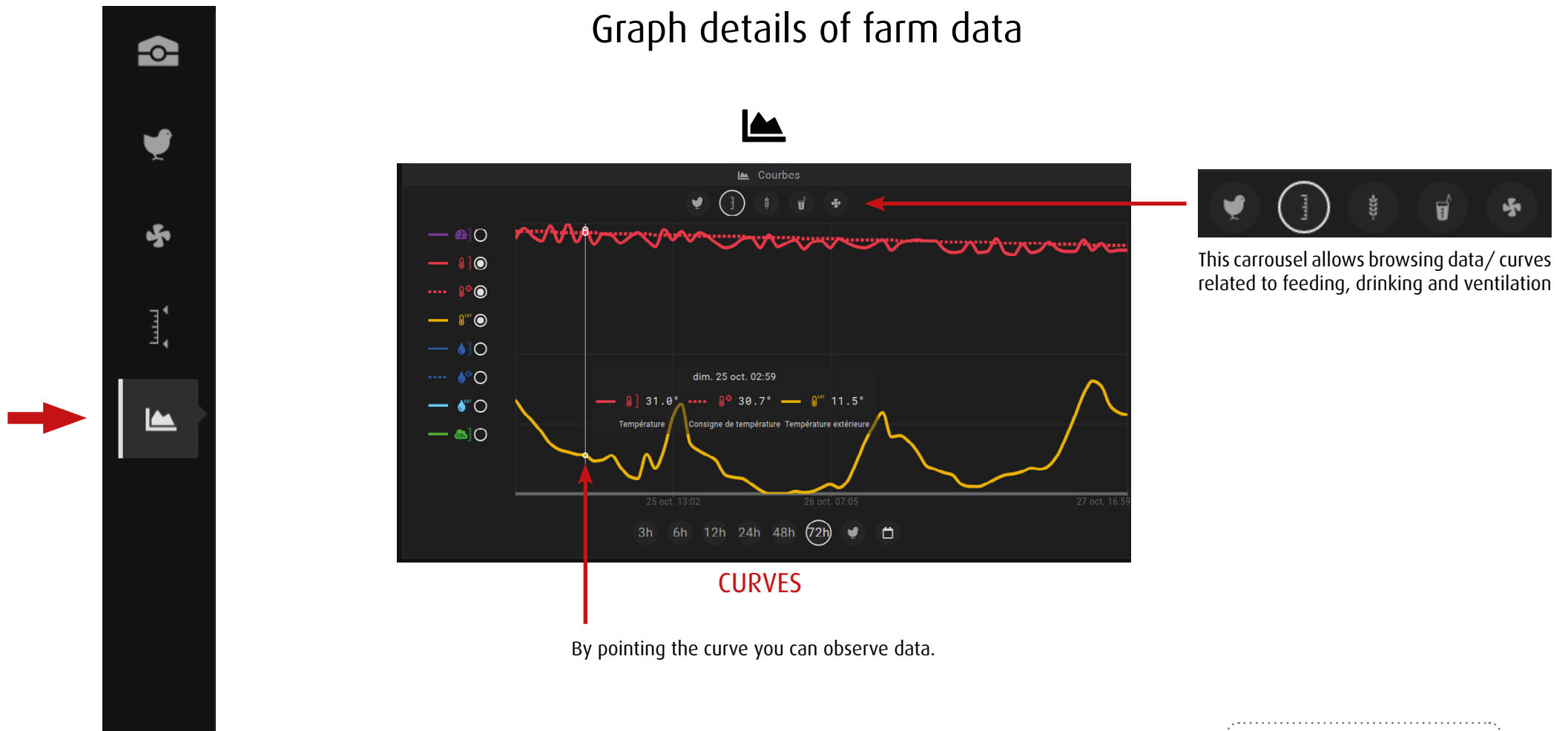
Displayed with measurement time

■ TECHNICAL INFORMATION

DASHBOARDS FOR ANALYSIS

«CURVES» DASHBOARD

Graph details of farm data



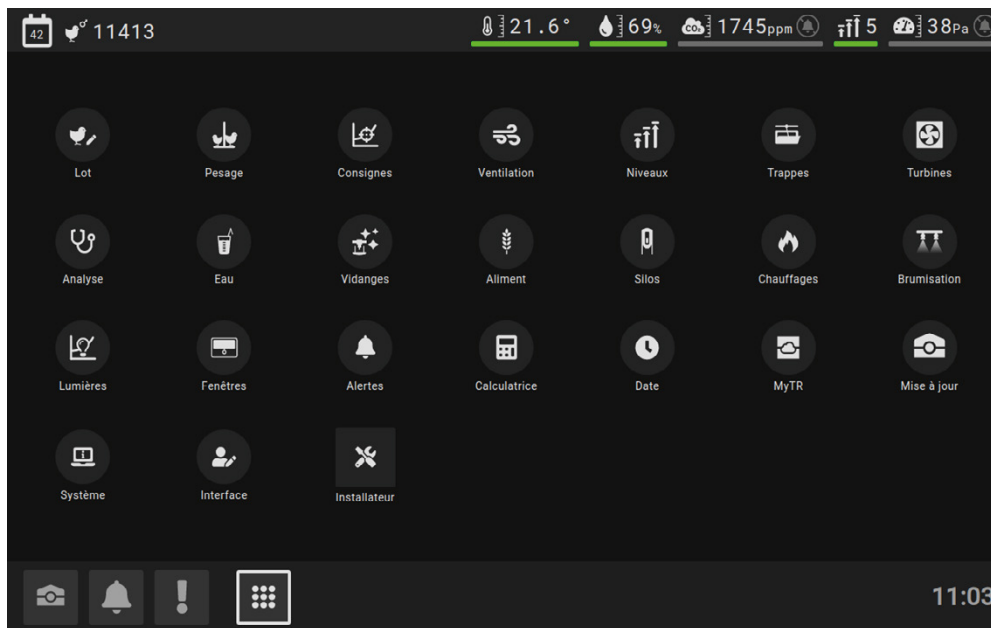
By pointing the curve you can observe data.

TECHNICAL INFORMATION

FEATURES - MAIN MENU FOR MANAGEMENT

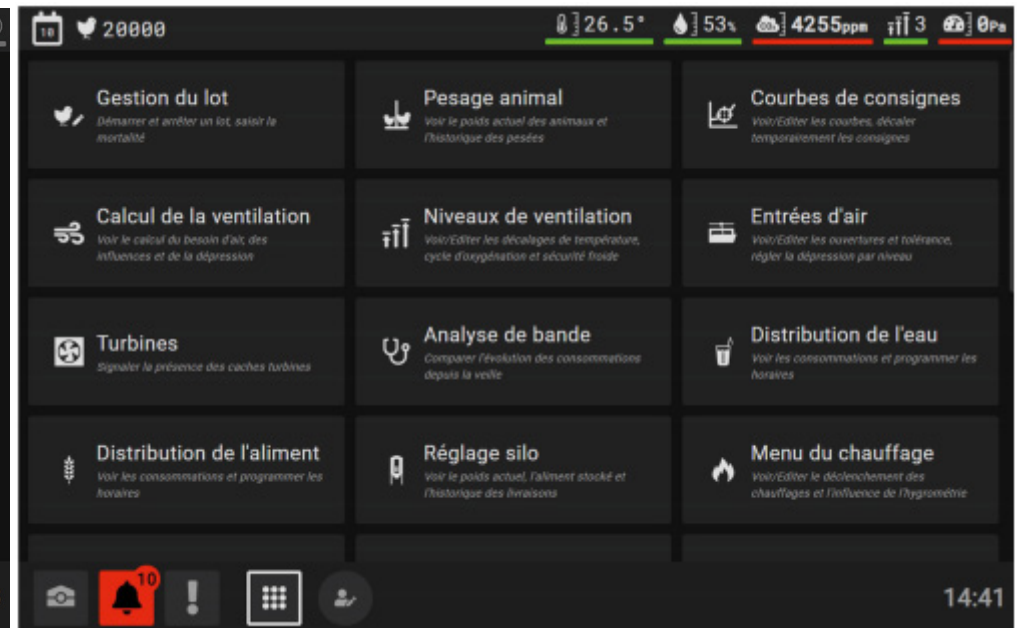
2 TYPES OF DISPLAY

App Version



Very visual and compact

Educational Version



Easy handling

Allows access to everyone with a quick features and icons understanding

■ TECHNICAL INFORMATION

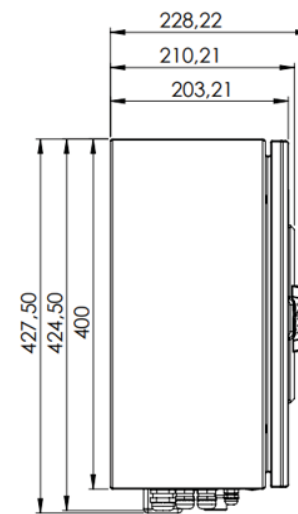
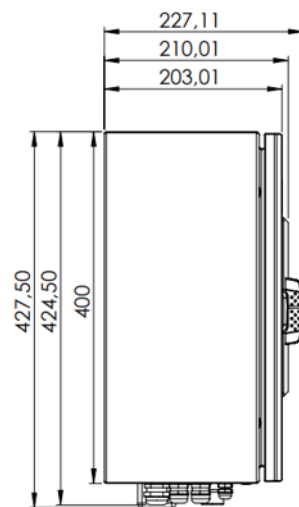
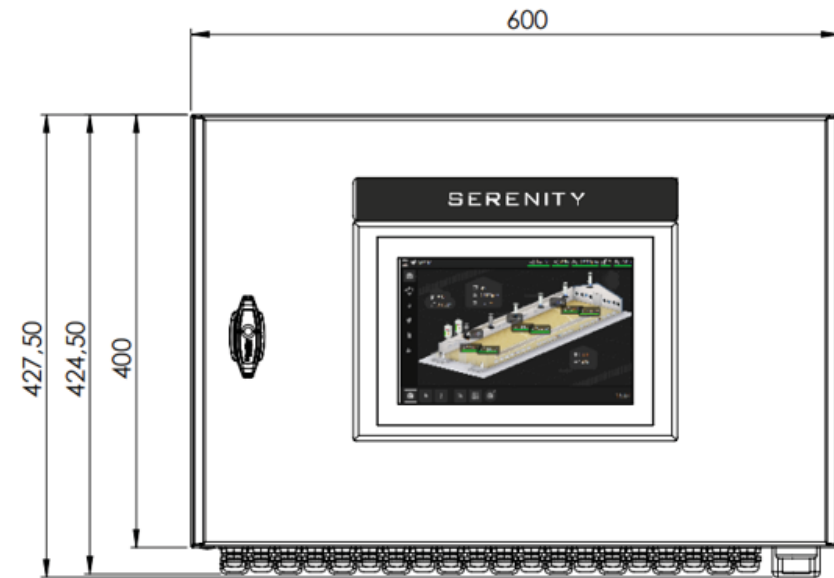
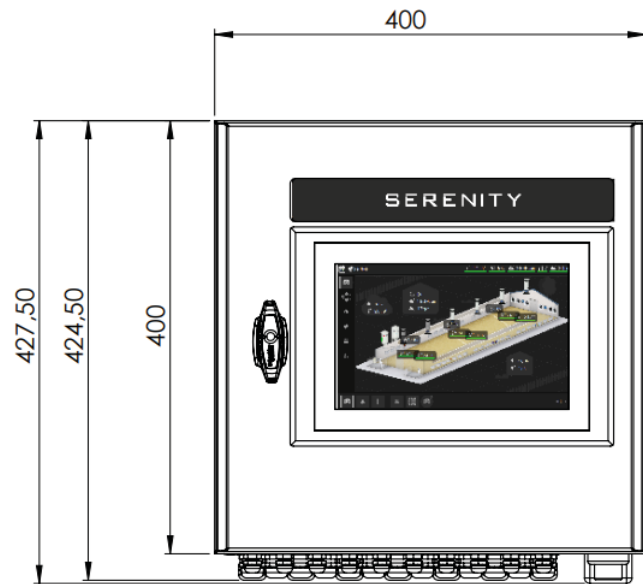
CONNECTIVITY

- Farm site management
- Allows secure remote access

All the teams will work on MyTR update in 2021.

■ TECHNICAL INFORMATION

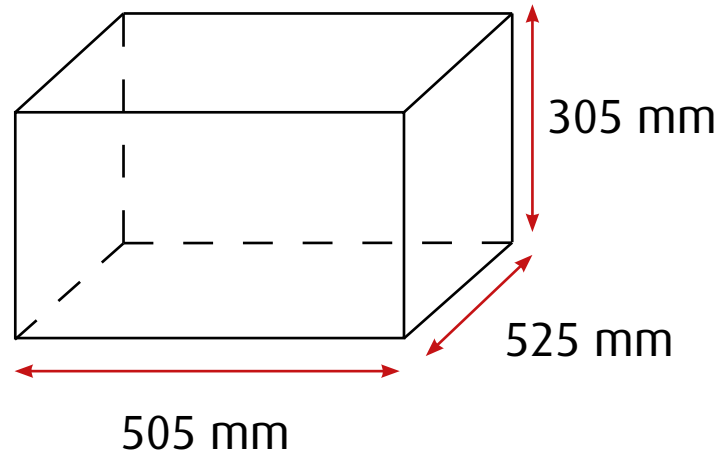
DIMENSIONS



■ TECHNICAL INFORMATION

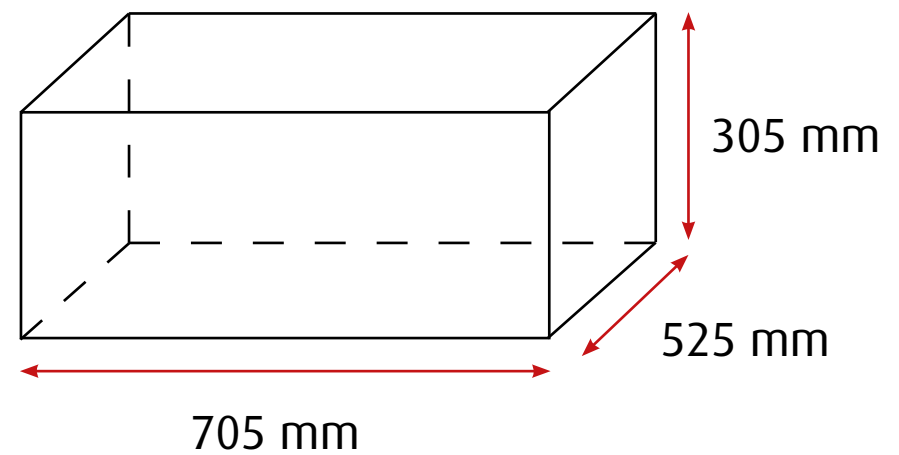
PACKAGING

Small model



525 x 305 x 505mm
11,34 kg

Big Model



525 x 305 x 705mm
16,47 kg

■ IN PLACE

SERENITY



■ **IN PLACE**

SERENITY

